



SERVANT'S HEART MINISTRY  
ANNUAL REPORT

# 2022



**NOT TO BE  
SERVED BUT  
TO SERVE  
OTHERS.**

**MATTHEW 20:28**

# Table of contents

Mission & Core Values .....	3, 4
2024 Year in Review .....	5, 6
<b>Renovation Projects</b>	
Stats .....	7, 8
Mission .....	9, 10
Projects '24 .....	11, 12
The Great Falls Center .....	13, 14
<b>Workmanship Program</b>	
Stats .....	15, 16
Mission .....	17, 18
CPM Course .....	19, 20
Other Courses .....	21, 22
Youth .....	23, 24
Thank You to our Volunteers .....	25, 26
Growth .....	27, 28
Partners .....	29, 30
Staff & Board .....	31, 32
Get Involved .....	33, 34

# BUILDING TOWARDS A BETTER FUTURE.



*core  
mission*



**Servant's Heart Ministry** is a non-profit construction organization that seeks to model Christ's example of serving by improving the quality of life in under-resourced communities through **renovation projects and trades training and mentorship.**

# core values



## **LOVING**

Intentionally meeting people of different backgrounds where they're at with no agenda but to meet needs and build relationships

## **EMPOWERING**

Coming alongside organizations and individuals, believing in their vision and equipping their mission through our projects

## **TRAINING**

Providing individuals with tangible skills that equip them to be servants in their communities

## **SERVING**

Showing up with a heart for others and a willingness to take on whatever comes our way and give our best to serve the community

# 2024

*year in review*



**ARMY OF  
NORMAL  
FOLKS  
PODCAST**

Our Director of Operations, Christina Mendez, shared her story of going from fashion design to the trades and finding purpose in service.

## **BUILDFEST GLENN JACOBSEN MEMORIAL FUNDRAISER**

In May we hosted the first ever BUILD FEST, a celebratory community day with food trucks, live music, course demonstrations, and woodshop activities. The event raised \$40K and honored the memory of Glenn Jacobsen, one of our founders.

## **TOOK ON 2 MASSIVE RENOVATION PROJECTS**

Our team took on two long-term projects this year! Both City Relief and New Hope had buildings that required complete renovations. The work took months, and the impact on these ministries is tremendous.

## **ADDED A 3RD WEEK OF CAMP CRAFTSMAN**

We expanded Camp Craftsman to three weeks this year, each sponsored by Church Partners. A total of 74 girls and boys, ages 10-14, came and had a blast. They showed amazing creativity and learned a lot!

## **GREW OUR GEAR**

Our fleet expanded by 2, but our gear grew more. The team gained a mason dump, a man lift, 3 scissor trucks, and several hook truck accessories!

## **GREW IN STAFF**

We have 7 new staff members! Two are working with the Field Team; two with Operations; and 3 with Marketing & Communications.

## **LAUNCHED THE PILOT AUTOMOTIVE COURSE**

We have Automotive! This fall, in a brand new bay with 2 lifts, 3 new instructors and 8 students launched the 5th course of our Workmanship Program.

## **WE GOT INTO THE WEDDING BUSINESS**

SHM found a new way to serve our community when The Art Factory suddenly closed leaving brides without a venue. Since the end of September, we have hosted 11 events have more future bookings secured.

## **TGFC GOT THE GREEN LIGHT**

The City of Paterson approved our plans, and construction began on The Great Falls Center! The official groundbreaking took place on November 26th.



**GEORGE  
TO THE  
RESCUE  
TV SHOW**

Servant's Heart was featured on an episode of George to the Rescue (NBC) in April. Our team helped build cozy homes for therapy horses in Chester, NJ.

# 2024 RENOVATION PROJECTS

“

"We know the resources that we donate are going to an organization that helps to transform not only physical buildings, but more importantly also transforms people's lives. Whether it's the staff and volunteers working for Servant's Heart, the members of the churches and nonprofits that are having work done or the people in the communities served by those churches and nonprofits the monies and materials that we donate help to reach many people in a transformative way."

**TIM WESTRA**  
Wayne Tile, *President*

”

**\$3,164,518**

TOTAL ESTIMATED  
VALUE OF ALL PROJECTS  
WITHOUT SHM HELP

**\$1,399.163**

TOTAL ACTUAL COST  
PAID BY OUR PARTNERS  
FOR ALL PROJECTS

**\$1,765,355**

TOTAL MOUNT SAVED  
FOR OUR PARTNERS  
BECAUSE OF SHM HELP



*The projects*

We equip the ministries of our project partners and empower their vision for their community by solving their building issues.

**15 MINISTRIES**  
IMPACTED THROUGH  
OUR PROJECTS

*The materials*

Quality materials are critical for quality work, but the costs can be a challenge for small organizations. Our industry partners generously give their resources to lower the cost for our project partners.

**\$100,000 WORTH**  
OF MATERIALS DONATED  
TO OUR PROJECTS

*The labor*

Our amazing hardworking volunteers are the reason we're able to provide our partners with quality builds at no labor cost. Their sacrificed Saturdays show our project partners that they matter.

Our renovation projects cover over 20 different trades, including: masonry, framing, insulation, drywall, windows and doors, electrical, plumbing, trim, flooring, tiling, landscaping, and more.

*The tools*

Quality equipment fuels the sustainability of this ministry. Through the generosity of our financial supporters, we've grown over the last 10 years from borrowing what we need to being equipped and empowered with resources of our own.

**470**  
**VOLUNTEERS**

TOTALING 9,500+  
VOLUNTEER HOURS

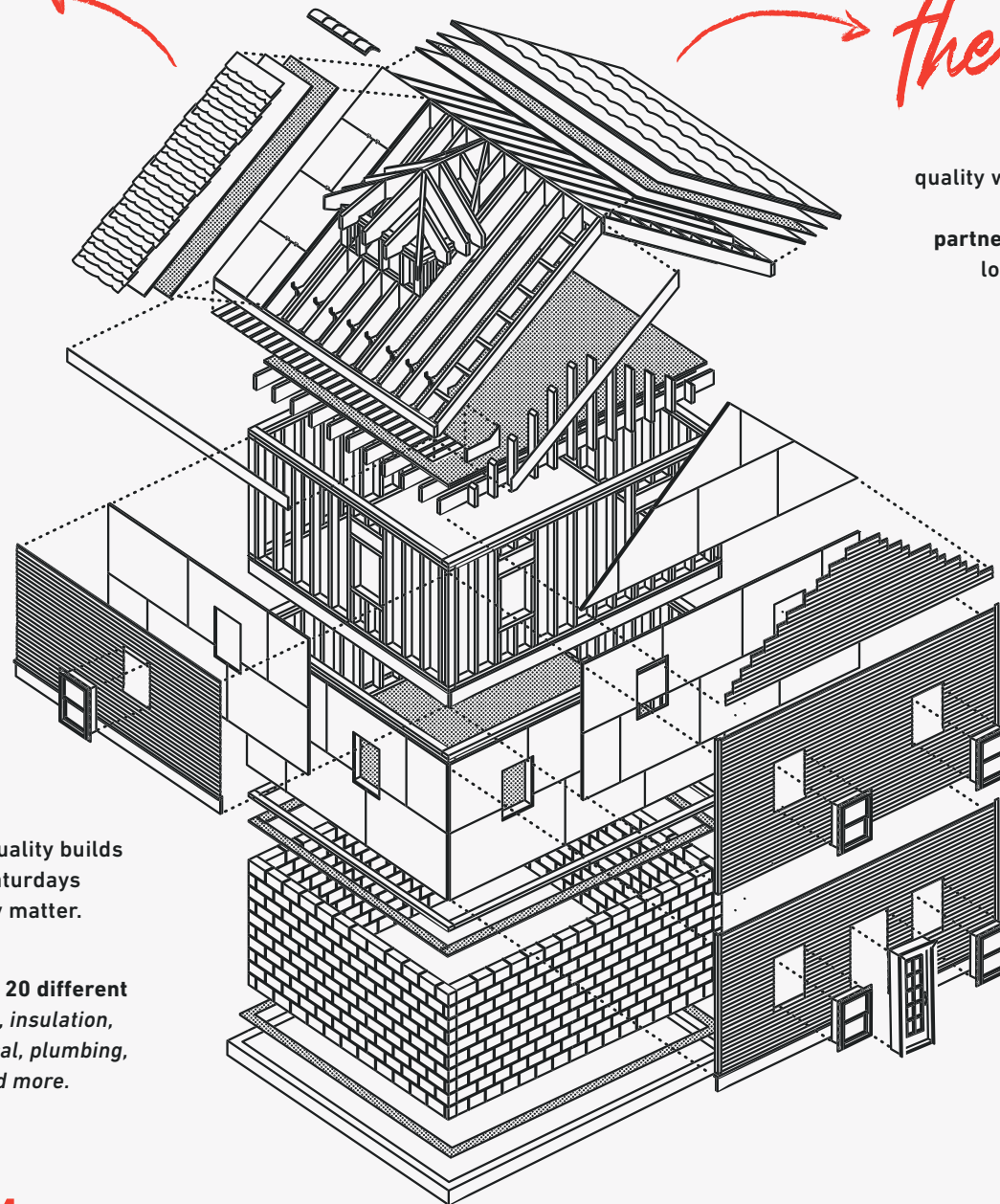
**244** RENOVATION PROJECTS

**185** WORKMANSHIP PROGRAM

**41** YOUTH PROGRAMS & EVENTS

**\$13,600 WORTH**  
OF TOOLS AND EQUIPMENT  
PURCHASED THIS YEAR

**\$161,750 WORTH**  
OF VEHICLE COSTS  
FUNDED THIS YEAR



# BUILDING UP THE COMMUNITY MATTERS

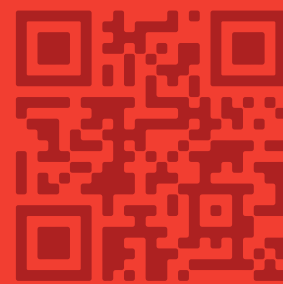
“

I have been working in the trades ever since getting out of high school. I admire all that Servants Heart is doing. They are doing a wonderful job in teaching the next generation. The 'kids' are a lot of fun and very eager to learn. As a volunteer it's a great time of fellowship and a chance to spread God's mission in our own backyard.

**DENNIS WINTER**

Volunteer, 5 Years

”



Hear from  
our project  
partners

# Empowering Non-profits

We partner with local non-profit organizations and churches in under-resourced communities, who are making an impact in their community, to assist them in the rebuilding or updating of their property. Through these renovation projects we meet their burdensome construction-related needs to enable them to advance their work in the community.

# Offering More Than Construction

**Mentoring our project partners** with advice from skilled professionals.

**Providing free labor** for our projects through our team of volunteers.

**Referring companies in our industry network** for professional needs.

**Lowering costs with donated and discounted materials** provided by industry partners.

# Meeting Their Building Needs

We meet the renovation needs of these organizations at only the cost of materials, because our volunteers model Christ's example of serving others to complete a wide variety of tasks:

Demolition	Plumbing	Drywall	Flooring
Masonry	Electrical	Spackle	Trim
Framing	Insulation	Tiling	Painting
Windows	Doors	Decks	Stairs

# 39%

**INCREASE IN BUILDING COSTS SINCE 2020**

# \$350

**AVERAGE BUILDING COST X SQUARE FOOT**

# \$100

**SHM BUILDING COST X SQUARE FOOT**

# New Hope

New Hope Community Ministries has grown exponentially since we took on their headquarters back in 2018. This year we tackled a total renovation of this 3-story house. Announced at the end of 2023, this project has been a huge undertaking!

We gutted it to the frame, then added a new roof, established a new floorplan, added all new mechanicals and an elevator. There's still more to do, but once completed, this project will expand New Hope's space by 4000 sq. ft., allowing them to double their food pantry, shorten the waitlist for ESL classes, and increase availability for mental healthcare offerings and support services to the community.

Projected Finish: March 2025.

**ESTIMATED VALUE: \$1,600,000**    **ACTUAL COST: \$700,000**

**PROJECT SAVINGS:**  
**\$900,000**

# City Relief

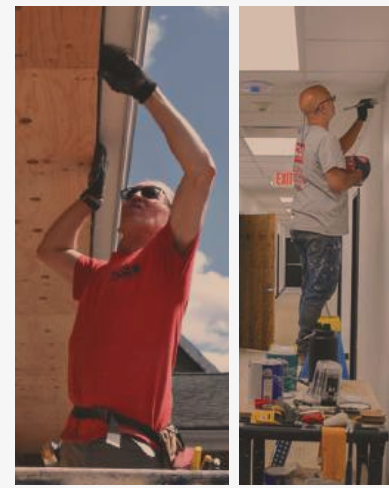
City Relief is a mobile outreach to those experiencing homelessness and poverty. They provide hot meals, supplies, and connections to resources for housing, employment, and health care.

They needed a new HQ and SHM delivered. This was another really big project for us in 2024. We worked with City Relief to redesign their new location in Clifton, then completely renovated the space. The facility now includes offices, kitchens, prep and storage areas, beautiful new bathrooms, and handicap access.

The C.O. came through just a couple weeks ago! We're so excited to see our friends move in and are honored to have partnered with them to serve a world in need.

**ESTIMATED VALUE: \$1,200,000**    **ACTUAL COST: \$561,000**

**PROJECT SAVINGS:**  
**\$639,000**



# 2024 PROJECTS

“

Servant's Heart is making something possible that was otherwise out of reach. They are transforming our new building so that we can serve more low income families who are really struggling right now. We're so thankful for their partnership!

”

**PHIL BEVERLY**

*Executive Director*  
New Hope Community Ministries

BETHEL CHURCH OF GOD

CITY RELIEF

CORNERSTONE CHRISTIAN CHURCH

DAWN TREADER CHRISTIAN SCHOOL

EBENEZER BAPTIST CHURCH

FAITH FAMILY FELLOWSHIP

GOOD SHEPHERD MISSION

HOPE OF DELIVERANCE

NEW CITY KIDS

NEW HOPE COMMUNITY MINISTRIES

NEW LIFE ISLAND

NORTHERN FRONTIER

THE ROCK MINISTRY

SHILOH MISSIONARY BAPTIST CHURCH

TOUCH THE WORLD

# THE GREAT FALLS CENTER

DAWN TREADER CHRISTIAN SCHOOL & SERVANT'S HEART MINISTRY

## *The Legacy*

This 40,000 sq. ft. building, located in the heart of the Great Falls area of Paterson, NJ, was owned by Herbert Van Denend, founder of Dawn Treader Christian School, who had a vision to share the gospel with the city of Paterson through education and community service. Establishing Dawn Treader Christian School in 1977 was just the start of Herbert's vision to empower the city of Paterson, with hopes to one day develop a community center and launch a trades school. Today, Dawn Treader Christian School and Servant's Heart Ministry are partnering together to carry out Herbert's vision and transform this historic property into a thriving community center that will impact Paterson for generations to come.

## *Our Vision*

This community center will be a place for community, creativity, and transformation, partnering with non-profit organizations and businesses to offer educational training, job opportunities and a Christ-centered environment that will equip individuals with valuable skills and ultimately empower the community of Paterson and its surrounding area.

### **VOCATIONAL TRAINING**

in culinary, construction trades, and the arts (theater, music, dance, tech, media)

### **JOB OPPORTUNITIES**

that allow individuals to develop their skills and build a sustainable career.

### **CREATIVE CHRIST-CENTERED ENVIRONMENT**

that empowers people of all different ethnic and socio-economic backgrounds to work together and use their creative gifts to serve the community.

# INITIAL CAMPAIGN

The Great Falls Center started with a major gift of the 39 McBride Avenue building by the Herbert Van Denend family, followed by phase 1 construction for sustainability. This year as we moved into the phase 2 of construction, we reached our initial campaign goal!

## INITIAL CAMPAIGN GOAL

~~\$6,875,000~~ *funded*

**THANK YOU!**

*What's happening in the building now?*

### MEETSPACES

We rent space to sustain our building while we build out the future of TGFC. We have 4 churches who meet weekly, 2 private offices rented daily, and plenty of weddings, parties, and conferences keeping the 3rd floor busy on the weekends.

### CITY IMPACT

The Dawn Treader team is regularly using TGFC for events and community service

### WORKMANSHIP

Our Workmanship Program is in full swing on the 1st floor running 4 courses twice a year.

### CONSTRUCTION

Work has already begun on the new windows while we await permits for the more extensive renovations. Much of 2025 will be dedicated to exterior and facade improvements.

# NEW CAMPAIGN

It's been a few years since we've set that first campaign goal, and a lot has happened since. With the rising costs of materials and changes to our initial plans, we still need your help to make this vision reality.

## NEW CAMPAIGN GOAL

**\$1,500,000**

**LEFT TO RAISE**

**\$400,000**

ADDITIONAL WINDOWS TO MEET THE HISTORICAL STANDARDS OF THE AREA

**\$250,000**

INCREASED COST OF MATERIALS SINCE THE INITIAL CAMPAIGN

**\$250,000**

ADDITIONAL STRUCTURE NEEDED DUE TO THE STRUCTURAL ANALYSIS

**\$300,000**

THEATER EQUIPMENT: SOUND, LIGHTING, TECH CHAIRS, ETC.

**\$100,000**

BUILDING SECURITY: CAMERAS, DOOR ACCESS, SYSTEMS, ETC.

**\$100,000**

ADDITION OF A TERRACE ON THE 2ND FLOOR, OFF THE AUDITORIUM.

**\$100,000**

ADDITIONAL BRICK FACADE COSTS TO MEET HISTORICAL STANDARDS

**CRAFTSMEN HAVE  
NOT MASTERED  
THEIR TRADE  
UNTIL THEY'VE  
PASSED  
IT ON TO  
SOMEONE  
ELSE.**



*The video*

**WORKMANSHIP**  
Paterson, NJ  
Est. 2019  
**TRAINING & MENTORSHIP**  
CPM COURSE



106 GRADUATES **THIS YEAR**

**40** **22** **19** **15** **8**  
CPM WOODWORKING WELDING TILE AUTO

288 GRADUATES **ALL TIME**

**149** **67** **41** **23** **8**  
CPM WOODWORKING WELDING TILE AUTO

# WORK MANSHIP<sup>20</sup> SHIP<sup>24</sup>

“

The Servant’s Heart approach to mentoring, coaching, and educating young people in the trades is directly impacting a critical need for our community on multiple fronts. the skills taught not only provide opportunities for meaningful employment, but empower young people with knowledge, confidence, and values that will benefit them throughout their lifetime.

**MATT KUIKEN**

*Vice President of Operations  
Kuiken Brothers Company*

”

## 2024 STUDENT STATS

**47%**

FROM UNDER-RESOURCED  
COMMUNITIES

**36%**

FROM PATERSON

**58%**

UNDER 25 YEARS-OLD

**14%**

FEMALES

*program objectives*

**EXPOSURE:**

Educate students on the labor, demands, and career potential of each trade

**TOOLS & SKILLS:**

Equip students with the tools and skills needed to pursue an apprenticeship

**EXPERIENCE:**

Provide students with diverse hands-on work experience in each trade

**MENTORSHIP:**

Mentor students as they decide which career they'd like to pursue

*what sets our program apart?*

**TAUGHT BY INDUSTRY PROFESSIONALS**

Classes are taught by trades professionals who bring a wealth of onsite work experience, many of which work a full day in the field before showing up to teach class.

**1 TO 2 TEACHER-TO-STUDENT RATIO**

Our teaching team consists of volunteers eager to pass their trade on to the next generation. Our volunteer base enables us to maintain a 1 to 2 teacher-to-student ratio that provides students a personalized learning experience.

**INSTILLING CORE VALUES EVERY CLASS**

We're equipping our students to be the quality workers we know they can be by reinforcing core values: Honesty, Trust, Timeliness, Craftsmanship, Teachability, Respect, and Integrity.



**BUILDING UP  
THE NEXT  
GENERATION  
OF TRADES  
PROFESSIONALS**



*Why do our students take our course?*

Our students are looking for an opportunity to build a career they love. For many it's a fresh start because the college route wasn't the right fit or because they're looking for a way to better provide for their family. We're coming alongside individuals who are interested in pursuing a trades career to teach them to be a true "craftsmen."

“

**Last semester we hired one of the students, and this semester we've hired another. I am very passionate about welding and will always look for ways to give back to the career field as a whole by supporting students who have an interest in welding or steel work. My hope for the future and future programs is that we can fill the course with local students and get them jobs in the local area to make Paterson a better place to work and live.**

**BEN OSBORNE**

**WELDING INSTRUCTOR**  
*Owner/Welder,*  
**Richards Industries**

”

## *class structure*

### **CHECK-IN**

Students arrive, check-in, and work on their "jobsite" project until class starts.

### **WELCOME & CORE VALUES**

A team member introduces the night's lesson and core value then quizzes the students with a question from the previous lesson. The student who answers correctly wins \$1.

### **CLASS - "SHOW & TELL"**

In the first hour, the instructor teaches through the lesson, while teaching assistants demonstrate behind.

### **DINNER BREAK**

Students are given a break to eat dinner, provided by volunteers, and socialize with other students and teachers.

### **HANDS-ON - "JOBSITE"**

Students practice what they learned in class by working individually and in groups on hands-on projects.

# C.P.M. COURSE

This course shows students how the key trades work together through the Critical Path Method (CPM) of building. Instructors teach from foundation to roof and walk students through building a shed. Classes cover all of the following: **general construction, masonry, landscaping, plumbing, electrical, and HVAC.**

## CLASS EVALUATION

Each student needs to complete a final evaluation in order to graduate, that tests on 5 key skills:

- *Reading a tape measure*
- *Hammering face and toe nails*
- *Driving screws with an impact driver*
- *Cutting a straight line with a circular saw*
- *Cutting miters with a chop saw*

*\*In all of the above we look for jobsite safety*

## GRADUATION TOOLBELT

Upon graduation, students get to keep the tool belt they used all semester, which is equipped with the basic tools they need to pursue a trades career.



**29 CLASSES | TUESDAYS & THURSDAYS**

**6:30PM-9:30PM | 18 YEARS & UP**

**SPRING & FALL SEMESTERS | FREE**

## HANDS-ON: "JOBSITE"

For the hands-on portion of the night, all students split up into groups. In these groups, alongside the teaching team, they build residential sheds. This allows them to put into practice all that they learned during the lecture. At the end of the semester, we sell off these sheds and recoup some money for the course.

# COURSE OUTLINE

- 01** Overview of Construction
- 02** Masonry: Footings
- 03** Masonry: Foundation
- 04** Landscaping
- 05** Masonry: Veneer
- 06** Framing: Floor System
- 07** Framing: Walls
- 08** Hands-on Class
- 09** Framing: Roof - Part 1
- 10** Framing: Roof - Part 2
- 11** Decks, Stairs, Rails
- 12** Roofing
- 13** HVAC: Heat
- 14** HVAC: Field Trip
- 15** Plumbing: Waste
- 16** Plumbing: Water, Gas
- 17** Electrical: Installation Prep
- 18** Electrical: Installation
- 19** Windows, Ext. Doors, Wrap
- 20** Siding
- 21** Aluminum Brake
- 22** Steel Framing
- 23** Insulation, Drywall, Spackle
- 24** HVAC: Cool
- 25** Plumbing: Fixtures
- 26** Electrical: Devices
- 27** Trim & Interior Doors
- 28** Semester Review
- 29** Graduation

“

Taking the courses not only added to my knowledge of trades, it also added to my need and desire to learn so much more. I have some trades I'm more interested than others, but I want to learn so much about all of them. I can see myself having a life-long career in trades.

**ANTONY HERNANDEZ**

*CPM Student  
Spring 2024*

”

# TEACHING TEAM

**JOHN OOSTDYK**

**Instructor, General Construction**  
*26 yrs in General Construction*

**LARRY DYKHOUSE JR.**

**Instructor, General Construction**  
*32 yrs in General Carpentry*

**DAVID JUSTNES**

**Instructor, General Construction**  
*40 yrs in General Construction*

**PAUL BRAUNIUS**

**Instructor, Drywall**  
*40+ yrs in General Construction*

**DANNY HABOOB**

**Instructor, General Construction**  
*23 yrs in General Construction*

**ERIK BOE**

**Instructor, Engineering**  
*20 yrs in Civil Engineering*

**MATTHEW WOLFE**

**Instructor, Architecture**  
*18 yrs in Architecture*

**DON HOITSMA**

**Instructor, Masonry**  
*41 yrs in masonry*

**JOHN PORCELLI**

**Instructor, Masonry**  
*Capstone Construction*

**PAT PULUSE**

**Instructor, Masonry**  
*35+ yrs in masonry*

**DAVE BEASLEY**

**Instructor, Landscaping**  
*Borst Landscape & Design*

**DOMINICK CAPONE**

**Instructor, Landscaping**  
*Borst Landscape & Design*

**ROB DEROSA**

**Instructor, Landscaping**  
*Borst Landscape & Design*

**MIKE LAPINSKY**

**Instructor, Landscaping**  
*Borst Landscape & Design*

**JUAN ROMO**

**Instructor, Landscaping**  
*Borst Landscape & Design*

**STAN HANKINSON**

**Instructor, Plumbing**  
*40 yrs in Plumbing*

**DOUG GREENFIELD**

**Instructor, Plumbing**  
*27 yrs in plumbing*

**DAN DEBLOCK**

**Instructor, Plumbing**  
*38 yrs in plumbing*

**MATT GRAMAZIO**

**Instructor, Electrical**  
*18 yrs in electrical*

**CRAIG YANY**

**Instructor, Electrical**  
*36 yrs in electrical*

**TONY DEDRICK**

**Instructor, Electrical**  
*45 yrs in electrical*

**TIM BRAUNLIN**

**Instructor, Electrical**  
*36 yrs in electrical*

**BILL TOLSMA**

**Instructor, HVAC**  
*Reiner Heating & Air*

**MIKE TOLSMA**

**Instructor, HVAC**  
*Reiner Heating & Air*

**RON PEPPER**

**Instructor, HVAC**  
*One Hour Air*

**BOB BARCLAY**

**Instructor, HVAC**  
*21 yrs in HVAC*

**JON BELANUS**

**Instructor, Insulation/Drywall**  
*JB Insulation & Drywall*

1 IN 4

1 in 4 construction workers are older than 55, retirements will continue to whittle away at the construction workforce.

40%

Over 40% of the current U.S. construction workforce is expected to retire over the next decade.

650,000

About 650,000 workers are currently missing from the construction industry. Construction backlogs are now at a 4-year high.



# WELDING COURSE

This course exposes 10 students each semester to opportunities in the welding industry, while equipping them with the basic skills required to start a welding career: **MIG, TIG, Stick, joint & weld types, AWS standards, and welding applications.**

- 29 CLASSES
- TUES & THURS
- SPRING & FALL SEMESTERS
- 18 YEARS & UP
- 6:30PM-9:30PM

## CLASS EVALUATION

To graduate each student completes a final evaluation that tests the basics of a MIG weld.

**BEN OSBORNE**  
Course Lead & Instructor  
*14+ yrs in welding*

**JIM PINO**  
Instructor  
*19+ years in welding*

**TOM WIEGERS**  
Instructor  
*40+ years in welding*

**RAWN LEEGWATER**  
Instructor  
*30+ yrs in welding*

**CHASE TANIS**  
Instructor  
*14+ yrs in welding*

MEDIAN AGE  
OF A WELDER:  
**55 YRS**

PREDICTED  
WELDER SHORTAGE  
IN NEXT 4 YEARS:  
**330,000  
WELDERS**



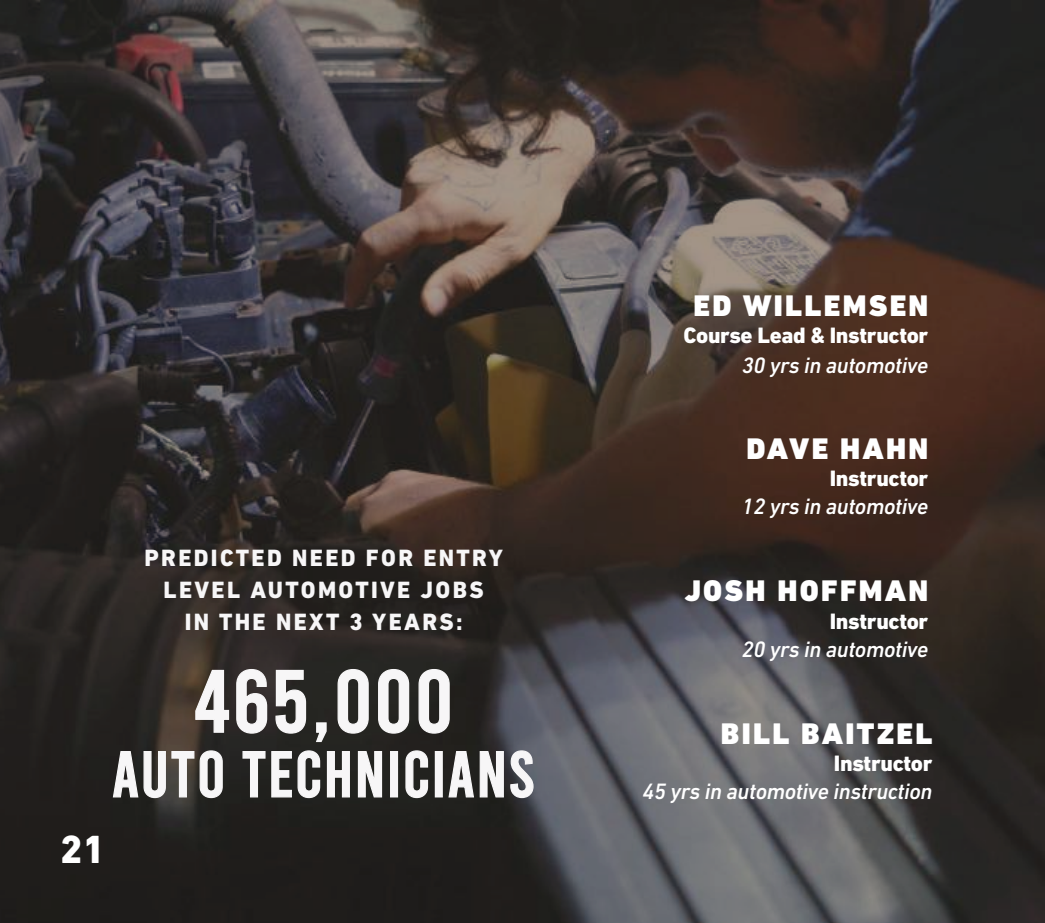
# AUTOMOTIVE COURSE

- 29 CLASSES
- TUES & THURS
- SPRING & FALL SEMESTERS
- 18 YEARS & UP
- 6:30PM-9:30PM

Our free introductory automotive course will expose 8 students each semester to the careers involved in auto mechanics and walk them through the basics of engines, drivetrain, brakes, exhaust, electronics, and body repair.

## CLASS EVALUATION

To graduate each student completes an evaluation that tests the automotive basics.



**ED WILLEMSSEN**  
Course Lead & Instructor  
*30 yrs in automotive*

**DAVE HAHN**  
Instructor  
*12 yrs in automotive*

**JOSH HOFFMAN**  
Instructor  
*20 yrs in automotive*

**BILL BAITZEL**  
Instructor  
*45 yrs in automotive instruction*

PREDICTED NEED FOR ENTRY  
LEVEL AUTOMOTIVE JOBS  
IN THE NEXT 3 YEARS:

**465,000  
AUTO TECHNICIANS**

# TILE COURSE

- 20 CLASSES
- TUES & THURS
- SPRING & FALL SEMESTERS
- 18 YEARS & UP
- 6:30PM-9:30PM

This course introduces 8 students to a career as a tile setter, walking them through the basics of the tiling industry and equipping them skills such as; **layout, tile setting and grouting.**

## CLASS EVALUATION

To graduate each student completes an evaluation that tests tiling basics.

### ANDY TYLER

Course Lead  
15 yrs in the tile industry

### ZACH WESTRA

Instructor  
15 yrs in the tile industry

### MARK WISSE

Instructor  
40 yrs as a tile setter

### MIKE DINERO

Instructor  
42 yrs as a tile setter

ANNUAL SHORTAGE OF SKILLED TILE SETTERS:

# 7,500 JOBS



# FINE WOODWORKING COURSE

- 29 CLASSES
- TUES & THURS
- SPRING & FALL SEMESTERS
- 16 YEARS & UP
- 6:30PM-9:30PM

This course introduces 12 students to the art of fine woodworking, as they gain hands-on woodworking experience and learn the **foundational techniques of drafting, joinery, finishing, cabinetry, and millwork.**



### JOHN HABOOB

Course Lead & Instructor

### CRAIG TEITSMA

Instructor

### DUNCAN CRONWELL

Instructor

### GARY NICOLETTI

Instructor

### ANGELO POLIHROM

Instructor

# 70%

PERCENT OF HIGH SCHOOLS WITH NO WOODSHOP



# WORKMANSHIP PROGRAM

*Franklin, NJ*

Our Workmanship Program, located in Paterson, NJ has grown tremendously over the last 5 years.

Graduating a total of 288 students, we've seen the incredible impact trades training and mentorship has had in these student's lives. We're excited to bring all that we've learned and developed to Franklin, NJ and expand our reach for building up the next generation of trades professionals.



# Join Workmanship's Volunteer Team

## The Workmanship Program:

*Franklin* will kick off in January 2026 with a pilot CPM Course.

It'll take a team of committed volunteers to get this program up and running. Whether you're a skilled tradesmen or have gifts for hospitality or mentorship, we have opportunities for you to serve:

## 2. TEACHING ASSISTANTS

Assist the instructors with leading the students through the hands- on portion of class.

*Committed to at least 22 of the 29 nights of class*

## 4. MEALS

Provide a meal for students and volunteers on 1 night of class.

## 1. INSTRUCTORS:

Teach through the curriculum of 1 or more classes and lead the students through the hands-on portion of class.

### TRADE COMMITMENT

Masonry	—————	3 classes
Landscaping	—————	1 class
Electrical	—————	3 classes
Plumbing	—————	3 classes
HVAC	—————	3 classes
Gen. Construction	———	13 classes

## 3. STUDENT ADVOCATES

Check in with 5 students 3 times each semester to make sure class is going well for them.

## 5. HOSTS

Sets up, serves, and cleans up dinner

# Costs to launch

## BUILD OUT: \$125,000

- New Entrance
- Bathrooms
- Small Kitchen
- Wall Layout
- HVAC System

## FURNISHINGS: \$20,000

- Racks & Shelves
- TV & Speaker
- Computer
- Tables & Chairs
- Kitchen Appliances

## ONGOING: \$125,000

- Tools
- Program Director
- Misc. Supplies

**TOTAL: \$270,000**

# YOUTH PROGRAMS <sup>2024</sup>

A total of 216 lives were impacted through our Youth Programs this year, with Camp Craftsman and Girl Shop Talk being the keystones of our summer activities.

## CAMP CRAFTSMAN

*youth workshop*

3 WEEKS  
74 CAMPERS  
AGES 10-14



SAM, 11 YRS



LEYLA, 13 YRS

## GIRL SHOP TALK

*woodshop + bible study*



8 WEDNESDAYS  
7 GIRLS  
AGES 13-16

7 girls, ages 13-16, joined us for the 2nd year of **Girl Shop Talk**. In this 8-week woodshop class and Bible study, they learned the basics of fine woodworking, honed their creativity skills, and studied the book of Philippians. Each girl took home a custom shelf designed and built with her own hands.

At **Camp Craftsman** we introduced 74 girls and boys to the exciting world of the trades with three interactive weeks of learning through fun games, epic competitions, and creative projects. At Camp Craftsman we introduce key skills like hammering, driving screws, and reading a tape measure, as well as the basics of carpentry, electrical, plumbing, and HVAC. Campers enjoyed hands-on experience and learned the importance of using your gifts and abilities to serve others.

# JOHN F. KENNEDY HIGH SCHOOL

*mechanical classes*

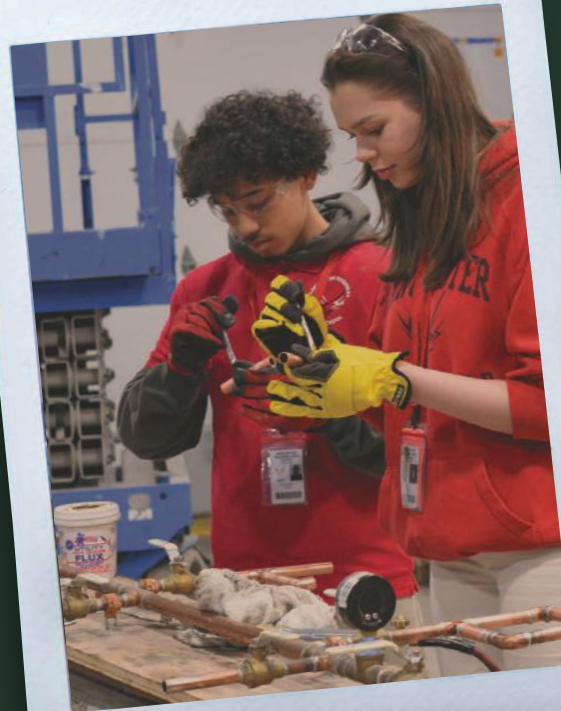
Twice a year students from JFK High School join us for 6 classes on electrical and plumbing, bringing 50 students a year.



# MANCHESTER & EASTSIDE HIGH SCHOOL

*Field Trips*

Manchester Regional and Eastside High School came down to our program with 25 students for an introductory mechanical class.







*"I thank my God every  
time I remember you. In all  
my prayers for all of you, I always  
pray with joy because of your  
partnership in the gospel from  
the first day until now"*  
*Philippians 1:3-5*

# WE'VE COME A LONG WAY

## 2013

**START OF THE BUDGET**  
100 VOLUNTEERS

**STAFF**  
John Oostdyk

**VEHICLE INVENTORY**  
1 Tooled Truck



## 2017

0% BUDGET INCREASE  
225 VOLUNTEERS

**STAFF**  
John Oostdyk  
→ Tim Braunlin

**VEHICLE INVENTORY**  
1 Tooled Truck  
→ 1 Mason Dump  
→ 1 Box Truck  
→ 1 Skid Steer



## 2018

0% BUDGET INCREASE  
275 VOLUNTEERS

**VEHICLE INVENTORY**

1 Tooled Truck  
1 Mason Dump  
1 Box Truck  
→ 1 Tooled Van  
1 Skid Steer  
→ 1 Excavator

**STAFF**

John Oostdyk  
Tim Braunlin  
→ Christina Mendez



## 2019

73% BUDGET INCREASE  
325 VOLUNTEERS

**VEHICLE INVENTORY**

1 Tooled Truck  
1 Mason Dump  
1 Box Truck  
→ 2 Tooled Vans  
1 Skid Steer  
1 Excavator

**STAFF**

John Oostdyk  
Tim Braunlin  
Christina Mendez  
→ Stan Hankinson  
→ Nate Breckenridge



## 2020

10% BUDGET INCREASE  
350 VOLUNTEERS

**VEHICLE INVENTORY**

1 Tooled Truck  
1 Mason Dump  
1 Box Truck  
→ 3 Tooled Van  
1 Skid Steer  
1 Excavator

**STAFF**

John Oostdyk  
Tim Braunlin  
Christina Mendez  
Stan Hankinson  
→ Gamar Virgin  
→ Michelle Reinstra



## 2021

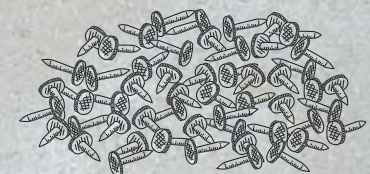
39% BUDGET INCREASE  
400 VOLUNTEERS

**VEHICLE INVENTORY**

1 Tooled Truck  
1 Mason Dump  
1 Box Truck  
3 Tooled Van  
1 Skid Steer  
1 Excavator  
→ 1 Man Lift  
→ 1 Wood Sawmill

**STAFF**

John Oostdyk  
Tim Braunlin  
Christina Mendez  
Stan Hankinson  
Gamar Virgin  
→ Deb Hoffman  
→ Darren Ojeda  
→ Daina Ommundsen



# 2022

31% BUDGET INCREASE

425 VOLUNTEERS

## VEHICLE INVENTORY

- 1 Tooled Truck
- 1 Skid Steer
- 1 Mason Dump
- 1 Excavator
- 1 Box Truck
- 1 Man Lift
- 3 Tooled Van
- 1 Hook Truck ←

## STAFF

- |                  |                 |
|------------------|-----------------|
| John Oostdyk     | Deb Hoffman     |
| Tim Braunlin     | Darren Ojeda    |
| Christina Mendez | Daina Ommundsen |
| Stan Hankinson   | → Nate Dorka    |
| Gamar Virgin     | → David Justnes |



# 2023

42% BUDGET INCREASE

450 VOLUNTEERS

## VEHICLE INVENTORY

- 1 Tooled Truck
- 1 Mason Dump
- 1 Box Truck
- 4 Tooled Van
- 1 Skid Steer
- 1 Excavator
- 1 Man Lift
- 1 Hook Truck



## STAFF

- |                  |                  |
|------------------|------------------|
| John Oostdyk     | Daina Ommundsen  |
| Tim Braunlin     | Nate Dorka       |
| Christina Mendez | → David Justnes  |
| Stan Hankinson   | → Andy Tyler     |
| Deb Hoffman      | → Yvonne Zuidema |
| Darren Ojeda     | → Jessica Sledge |
|                  | → Tom Wolfe      |

# 2024

20% BUDGET INCREASE

470 VOLUNTEERS

## VEHICLE INVENTORY

- 2 Tooled Trucks
- 1 Hook Truck
- 2 Mason Dump
- 3 Scissor Lifts ←
- 1 Box Truck
- 2 Wood Sawmills ←
- 4 Tooled Van
- 1 Car
- 1 Skid Steer
- 1 Excavator
- 2 Man Lifts ←



## STAFF

- |                  |                    |
|------------------|--------------------|
| John Oostdyk     | Deb Hoffman        |
| Tim Braunlin     | Darren Ojeda       |
| Christina Mendez | Nate Dorka         |
| Stan Hankinson   | David Justnes      |
|                  | → Andy Tyler       |
|                  | → Yvonne Zuidema   |
|                  | → Tom Wolfe        |
|                  | → Rosie Yates      |
|                  | → Kaitlyn Dorka    |
|                  | → John Warnet      |
|                  | → Eric Koenig      |
|                  | → Michael Harrison |
|                  | → Brendan Coyne    |
|                  | → Tanya Dennis     |

# 2025

33% BUDGET INCREASE

490 VOLUNTEERS

## VEHICLE INVENTORY

- 2 Tooled Trucks
- 2 Mason Dump
- 1 Box Truck
- 4 Tooled Van
- 1 Car
- 1 Skid Steer
- 1 Excavator
- 2 Man Lifts
- 1 Hook Truck
- 3 Scissor Lifts
- 2 Wood Sawmills



## STAFF

- |                  |                  |
|------------------|------------------|
| John Oostdyk     | Yvonne Zuidema   |
| Tim Braunlin     | Tom Wolfe        |
| Christina Mendez | Tanya Dennis     |
| Stan Hankinson   | Rosie Yates      |
| Deb Hoffman      | Kaitlyn Dorka    |
| Darren Ojeda     | John Warnet      |
| Nate Dorka       | Eric Koenig      |
| David Justnes    | Michael Harrison |
| Andy Tyler       | → Brendan Coyne  |
|                  | → Manuel Suero   |



**ABC**  
Supply Co. inc.

**NY-NJ**  
TRAILER SUPPLY

**G**  
**GREENFIELD**  
PLUMBING & HEATING

**KEN STEENSTRA**  
LANDSCAPING

**SCHLÜTER**  
SYSTEMS



**SHOTMEYER**

**BRAEN**



**KUIKEN BROTHERS**  
COMPANY, INCORPORATED  
RESIDENTIAL & COMMERCIAL BUILDING MATERIALS  
*Since 1912*

**C&E**  
BLADES AND SUPPLIES

**CLEAR VIEW**  
Architectural Metal & Glass  
INCORPORATED



*Industry  
Partners*

**KALOR**  
CONSTRUCTION INC.

**Scott's**  
Security Systems Inc.



IG Homes Repair

**DYKHOUSE**



CONSTRUCTION

**NONE  
OF THIS  
WOULD BE**

**ONE HOUR**  
HEATING & AIR CONDITIONING®  
*Always On Time...Or You Don't Pay A Dime!®*

**INTERSTATE**  
DRYWALL CORPORATION

**CEDAR HILL**  
NURSERY



Wayne  
Tile Company

**TRI-STATE**  
computer flooring co. inc.

**WOOD-N-PIPES**

**JB INSULATION**  
& DRYWALL

*Leequater*  
ELECTRIC INC.

*Wieggers Inc.*  
TRUCK BODIES - LIFTGATES - TRAILERS

*Power Supply*  
ELECTRICAL CONTRACTORS

**BLUE NAIL**  
EXTERIORS

*Suburban*  
ForkLIFT INC.

**REINER** GROUP INC.  
HEATING • AIR CONDITIONING • EST. 1934

**DON HOITSMA**  
*Est. 1990*  
MASON CONTRACTOR!  
*Ramsey, NJ*

★★★  
Freedom  
Steel  
T/A  
Richards  
Industries

**BORST**  
LANDSCAPE & DESIGN

**AVAN**  
ELECTRICAL SUPPLY INC.

**BRAUNIUS BROS.**  
INC.

**HANDI LIFT CA**

CRAIG ALLEN DESIGNS

**LAN**  
ASSOCIATES

**PRO TILE, LLC**  
— FLOORING —

**GTL**  
CONSTRUCTION  
TOGETHER...WE BUILD

**JMD**

**RCC**  
RAILROAD CONSTRUCTION COMPANY, INC.

**Outreach FX**  
Sound. Lighting. Video





*Church Partners*

CALVARY TEMPLE INTERNATIONAL



CHURCHALIVE

# POSSIBLE WITHOUT YOU.



*Other Partners*



COMMON PLACE CHURCH



The Bolger Foundation



# THE TEAM THAT KEEPS

## Our Staff

*development*



**JOHN OOSDYK**  
EXECUTIVE DIRECTOR



**NATE DORKA**  
DEVELOPMENT MANAGER



**YVONNE ZUIDEMA**  
GRANT COORDINATOR



**ANDY TYLER**  
PROGRAMS MANAGER



**SUSAN DADEKIAN**  
VOLUNTEER FINANCIAL CONTROLLER

*operations*

*projects*



**DAVID JUSTNES**  
PROJECTS DIRECTOR



**DARREN OJEDA**  
PROJECTS TEAM LEAD



**STAN HANKINSON**  
PROJECTS TEAM



**JOHN WARNET**  
PROJECTS TEAM



**BRENDAN COYNE**  
PROJECTS MANAGER



**TIM BRAUNLIN**  
PROJECTS TEAM



**TOM WOLFE**  
PROJECTS TEAM



**MANUEL SUERO**  
PROJECTS INTERN

# BUILDING

## Our Board



**CHRISTINA MENDEZ**  
DIRECTOR OF OPERATIONS  
& MARKETING



**JOHN OOSDZYK**  
PRESIDENT



**LARRY DYKHOUSE JR.**  
BOARD CHAIRMAN  
*President, Dykhouse  
Construction Co.*



**KEITH VONGLAHN**  
TREASURER  
*Director of Finance,  
Retired*



**DEB HOFFMAN**  
OFFICE MANAGER



**TANYA DENNIS**  
COMMUNICATIONS MANAGER



**WILLIE BRAUN**  
SECRETARY  
*Engineer, Harris*



**CHRIS CLAUSS**  
*Manager of Unified  
Communications Professional  
Services, ConvergeOne*



**JOHN DRIESSE**  
*Director of Construction,  
S Hekemian Group*



**KAIT DORKA**  
PROGRAMS ADMINISTRATOR



**ERIC KOENIG**  
GRAPHIC DESIGNER



**PETER HOOK**  
*Owner, Ken Steenstra  
Landscaping*



**JOHN STANLEY JR.**  
*VP of Business Development,  
Trim-Dim Corporation*



**JESSE VALLARO**  
*Senior Network Engineer,  
Axon Consulting Services, LLC*



**ROSIE YATES**  
OPERATIONS ASSISTANT



**MICHAEL HARRISON**  
CONTENT CREATOR



**RUTH YOST**  
*Food Scientist, Retired*



**CHERYL LYNCH**  
*Owner, C&E Blades and Supplies*

*operations*

*marketing*



# Get Involved

## VOLUNTEER



Whether on a jobsite or in a classroom, volunteers carry out the mission of Servant's Heart. Whatever your skill level, your time and effort make an impact.

## GIVE



Because of those who give... Students are taught, ministries are helped, communities are served, projects are finished. When you give, our work can continue and grow.

## PARTNER



Industry partners provide free and low-cost tools, materials, and equipment that allow us to build with excellence and train with craftsmanship.

**“As a local business,  
it's exciting for us to  
see the enthusiasm  
Servant's Heart shows  
for our trade and for  
our community. We are  
happy and blessed to  
partner with them and  
excited to see all that  
God has in the future!”**

**JOSH BRAEN**

*General Manager  
Braen Supply*

## **CONTACT US**

*We want to hear from you!*

 [info@servantsheartnj.org](mailto:info@servantsheartnj.org)

 929.445.7465

 [servantsheartnj.org](http://servantsheartnj.org)

 **Main Office:**  
495 Wyckoff Ave. Wyckoff, NJ 07481

 **The Great Falls Center:**  
39 McBride Ave. Paterson, NJ 07501

